

Celebrating Achievements and Outlook for the Future

ANPG is focused on engaging with potential investors to negotiate and bring solutions to ensure attractiveness as well as successful bonds

ANPG Agência Nacional
de Petróleo, Gás
e Biocombustíveis



ACHIEVEMENTS IN THE LAST 6 YEARS

7 "Super Majors" oil and gas producer are present in Angola (Chevron, ExxonMobil, Shell, Total, ENI, Equinor and BP).

\$23

Billions Investments in the **last 6 years**.

23

New companies in Angola's oil and gas sector. The number has risen from 15 to 38, representing **an increase more than 150%**.

70

New Blocks since 2019, The number has risen from 24 to 90, representing an increase **more than 200%**.

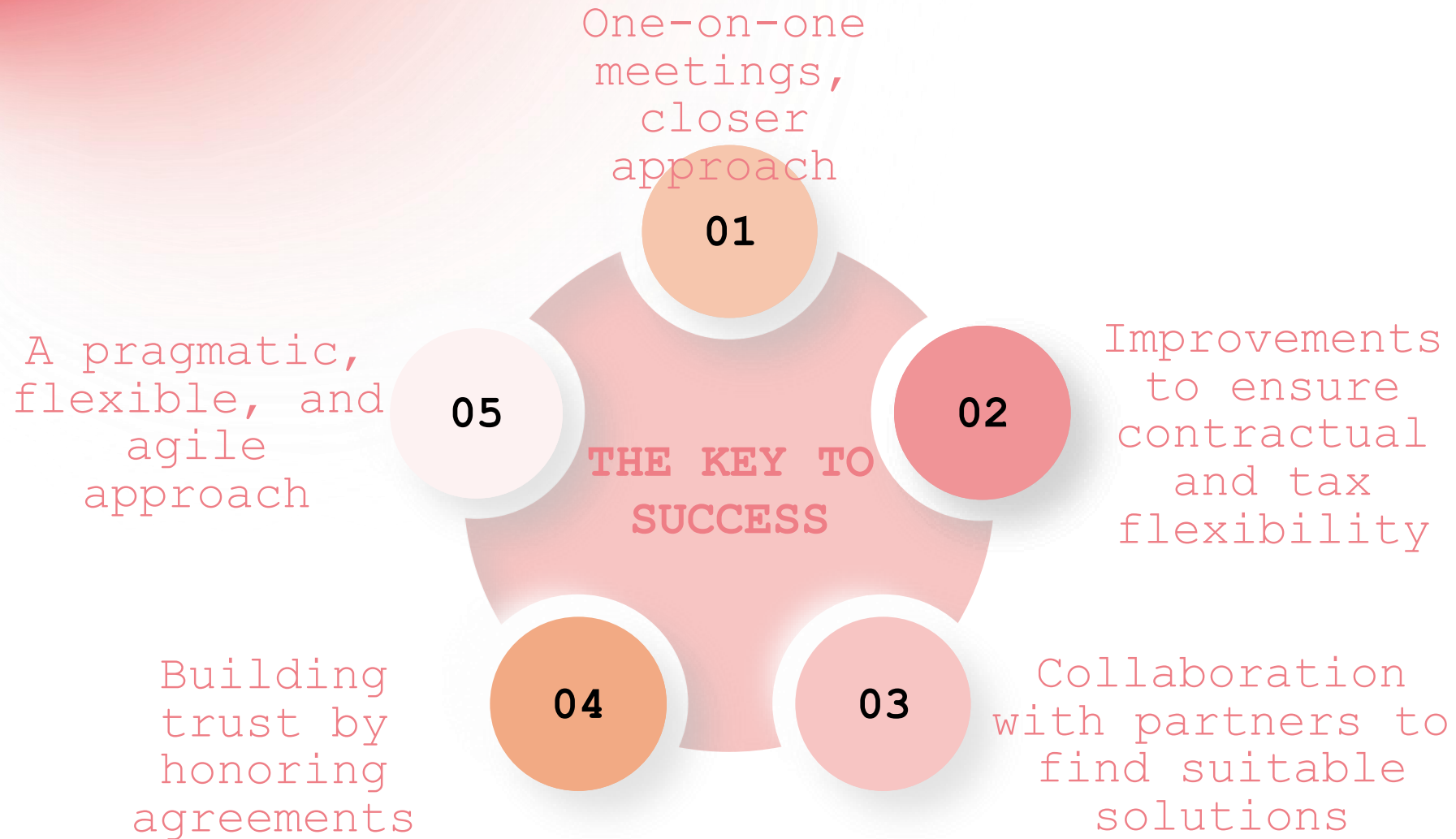
1st

Award as the **best Regulatory** agency in 2025 and **Bastion Legacy** by the AES.

1st

Non-associated gas well discovered (2025) - Block 1/14
New Gas Consortium - **first gas started March 2026**, production of 350 mmscf/d

HOW DID THE ANPG MANAGE TO ACHIEVE ALL THESE MILESTONES?



LOOKING AHEAD



Dialogue-based approach to finding solutions with investors

Become a leading energy hub in Africa

Award more than **50 blocks** and **unlock more than 35 TCF** of available gas opportunities next 5 years



Continue to be **Competitive** and creative, always offering **innovative solutions**



\$70 billion in expected investments over the next five years



Build and maintain **strong, lasting relationships** with partners

Attract new leading companies in the oil and gas sector

IMMEDIATE UPSTREAM OPPORTUNITIES

A structured offering of 23 high-potential blocks across three distinct operational environments and primary basins.

1 Offshore Opportunities

12 Blocks



Lower Congo Basin (48) · Kwanza Basin (7/21, 9/21, 23, 36, 37, 38, 39) · Benguela Basin (10/19) · Namibe Basin (11, 12, 13)

STRATEGIC FOCUS

High-yield shallow and deepwater scale

2 Onshore Reactivation

10 Blocks



Lower Congo Basin (CON 5, CON 9, CON 10, Cabinda Centro) · Kwanza Basin (KON 7, KON 17, KON 18, KON 20, KON 22, KON 23)

STRATEGIC FOCUS

Lower-entry, fast-cycle projects

3 Opportunity with Discovery

Lower Congo Basin - Chumbo DA (Block 18)



- Contingent Resources: 32.5 MMBO
- Prospective Resources: 277 MMBO
- API 33°

STRATEGIC FOCUS

Development Upside

4 Frontier Inner Basins

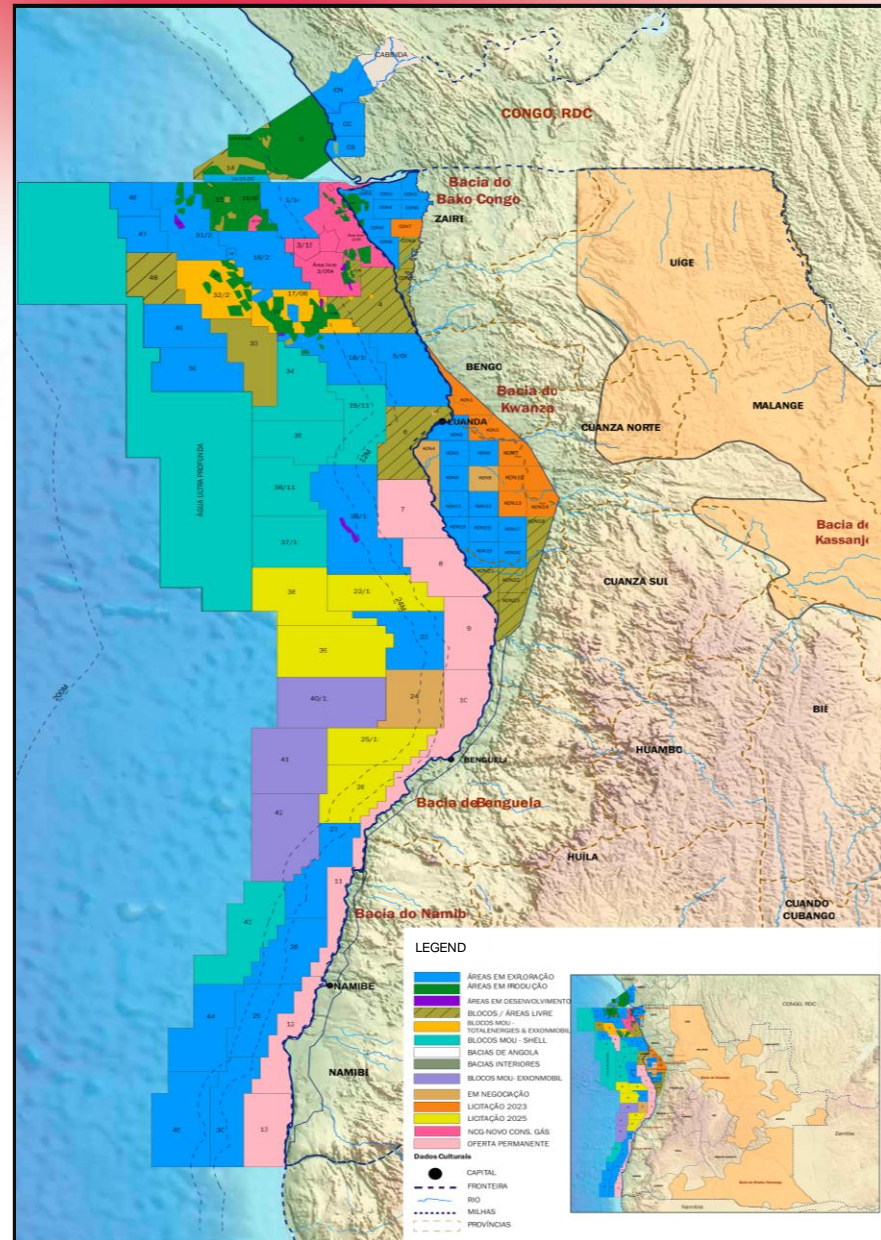
2 Basins



- Kassanje Basin
- Etosha-Okavango Basin

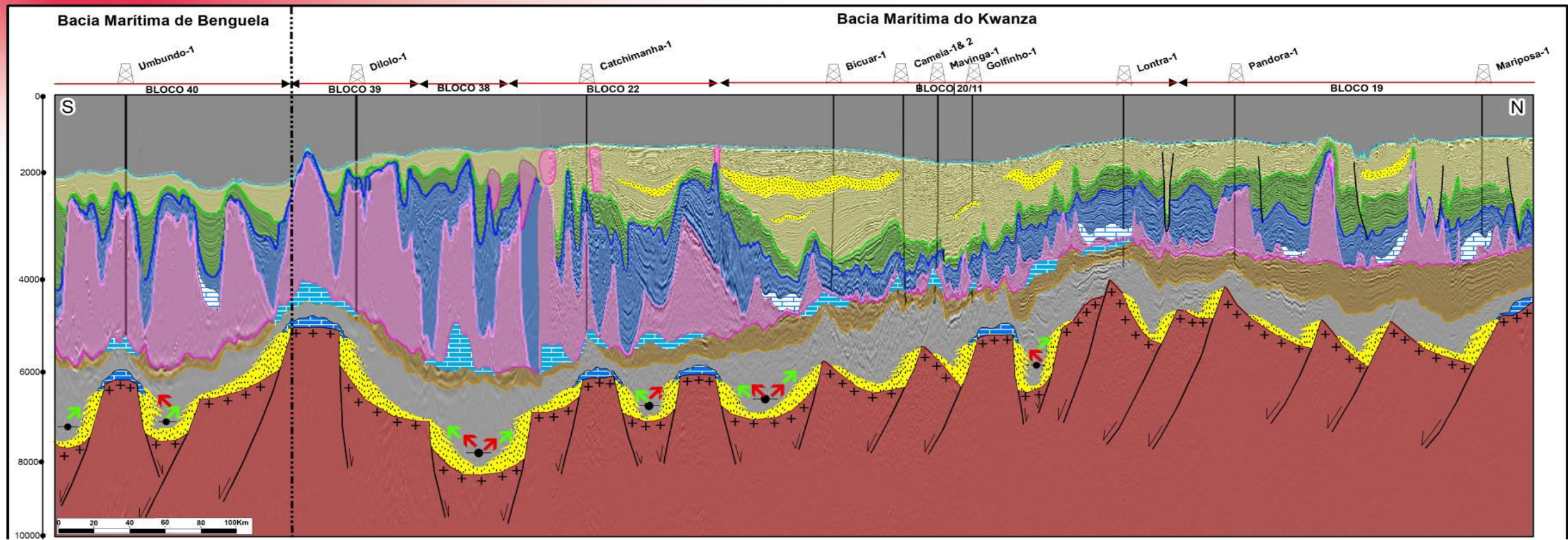
STRATEGIC FOCUS

Massive new upside



SUBSURFACE PRECISION

TARGETING HIGHLY PRODUCTIVE RESERVOIRS



Pre-Salt Mastery (2010 - Present)

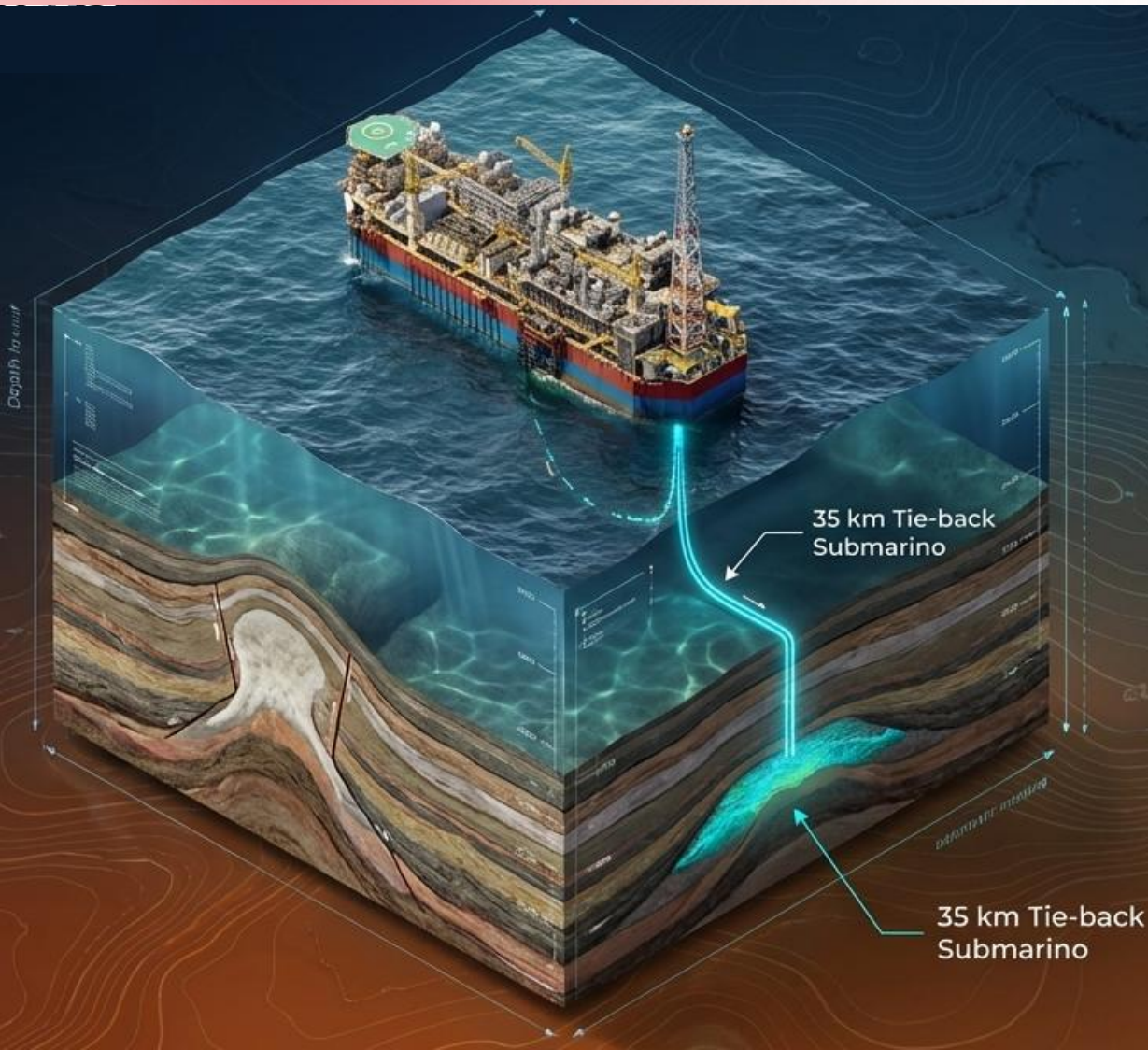
- Targets:
- ⊙ High-porosity microbial and coquina carbonates
 - ⊙ Sandstones

Post-Salt Plays

- Targets:
- ⊙ Expansive turbidite channels and Tertiary Troughs
 - ⊙ Oolitic limestones

PROOF OF CONCEPT: THE CHUMBO DISCOVERY

The Chumbo discovery proves the viability of high-Success, infrastructure-led exploration.



Facilities: Possible Development: Tie-back to FPSO Greater Plutonium (35 km)

Key Takeaway: Immediate monetization pathways exist by trying new discoveries back to existing world-class offshore infrastructure.

THE ASSET

Chumbo Discovery (Adjacent to Block 18).

Geological Target: Tertiary objective

Oil Quality: 33° API

Efficiency: 40.3% Recovery Factor

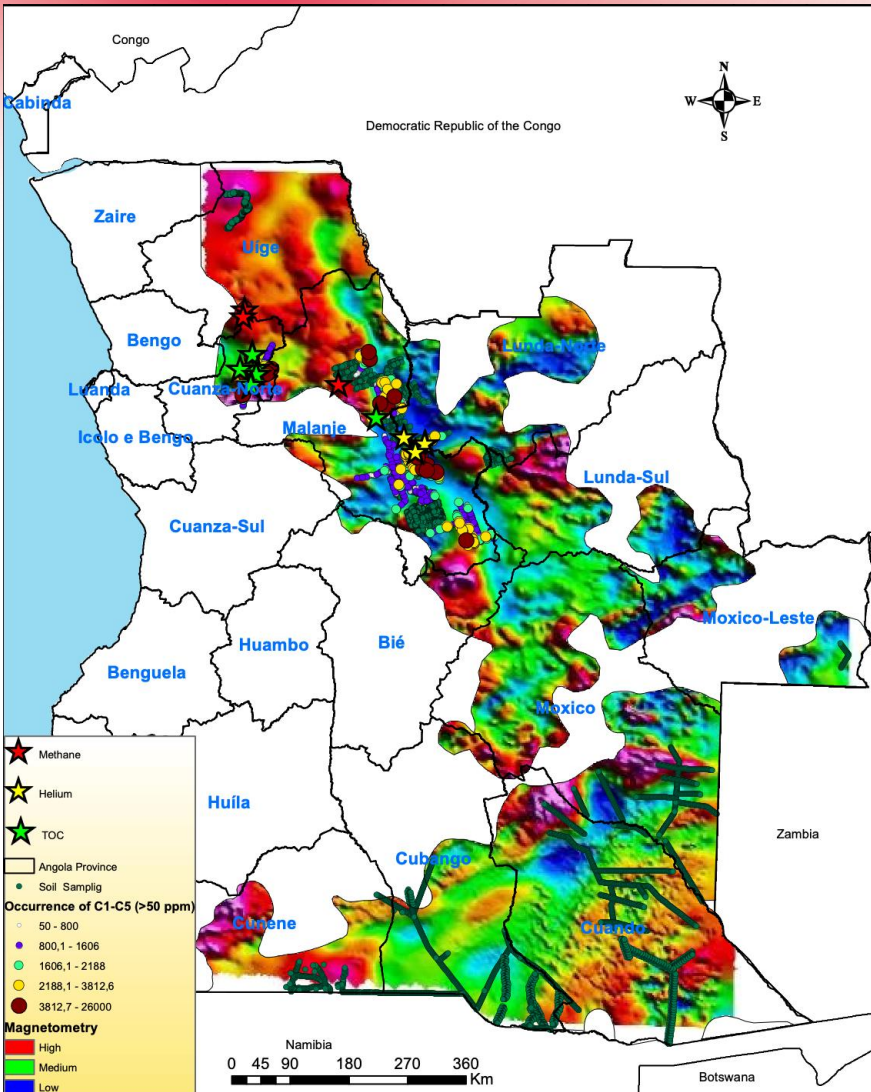
Seismic Coverage: 2D: 9 912,94 km | 3D: 2 857 km² | 4D: 1.981 km²

Geological Success Rate: 89.5% (across 13 Expl. And 3 Appraisal wells in the area).

Resource Scale:
Contingent Resources: 32.5 MMBO
Prospective Resources: 277 MMBO

THE NEXT FRONTIER: KASSANJE & ETOSHA-OKAVANGO

UNLOCK HYDROCARBON POTENTIAL IN UNDEREXPLORED FRONTIER BASINS



KASSANJE BASIN

Direct evidence of hydrocarbons

4 772 Geomicrobiological samples analyzed (revealed significant indications of hydrocarbons.)

MPOG OIL

49%

Indications
11% Type A

MPOG GAS

32%

Indications
12% Type A

HELIUM (HE)

0,5–1%

Concentration
Above the economic threshold

FORMATIONS AND SOURCES

Alto Chiloango Group · TOC 1,39% · Dry gas

Karoo Group — Lutoé Formation · TOC 0,73% · Oil

Methane (CH₄) · Concentration ~ 72% In the region

NEXT STEP Detailed seismic + stratigraphic well drilling



ETOSHA-OKAVANGO'S BASIN

Geological characterization in advanced phase

Basin already divided into blocks · Ready for bidding

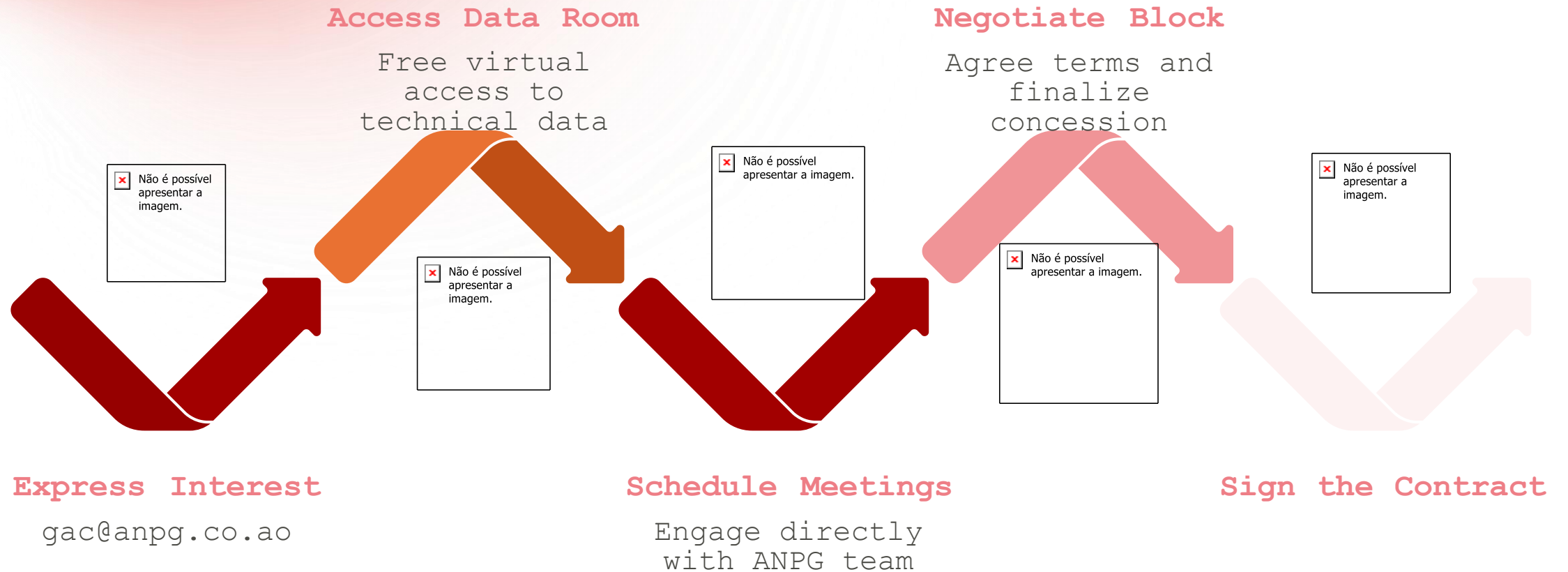
COMPLETED

IN PROGRESS

- Cartographic survey
- Soil sampling
- Laboratory analysis
- Geological map 1:100,000 / 1:25,000
- Structural framework
- Litostratigraphic column
- Geological/geochemical 3D model
- Division of the basin into blocks
- Correlating Geochemical analysis results to an effective petroleum system
- Seismic acquisition Feasibility study
- Seismic Acquisition Layout
- Study of the optimal positioning of the stratigraphic well
- Design drilling support installations for stratigraphic wells
- Study of gas occurrence

NEXT STEPS FOR INVESTORS

The path from interest to partnership is straightforward. ANPG has designed a clear, investor-friendly process to get you from conversation to concession as efficiently as possible.





ANGOLA

**Africa's most attractive
Upstream destination.**

We welcome new partners to unlock Angola's next chapter of energy growth

ANP **PG**

Agência Nacional de Petróleo, Gás e Biocombustíveis